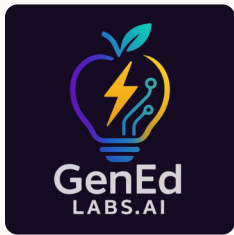


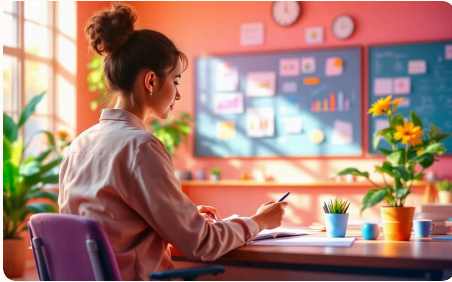
# 100 Ways of Using GenAI in Teacher Education



Victoria Hedlund  
[Victoria@genedlabs.ai](mailto:Victoria@genedlabs.ai)



# 100 Ways of using GenAI in Teacher Education - Overview of Topics



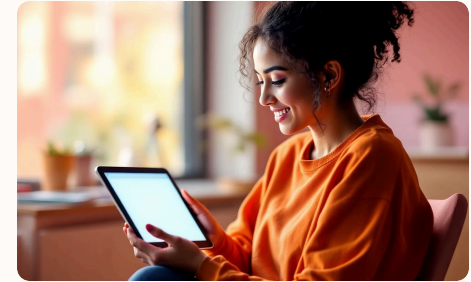
**Planning &  
Curriculum Design**



**Subject Knowledge  
for Teaching**



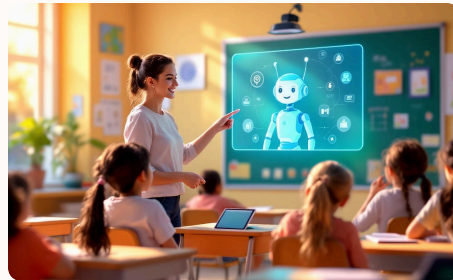
**Professional Studies**



**Reflective Practice**



**Modelling Pedagogy  
& Metacognition**



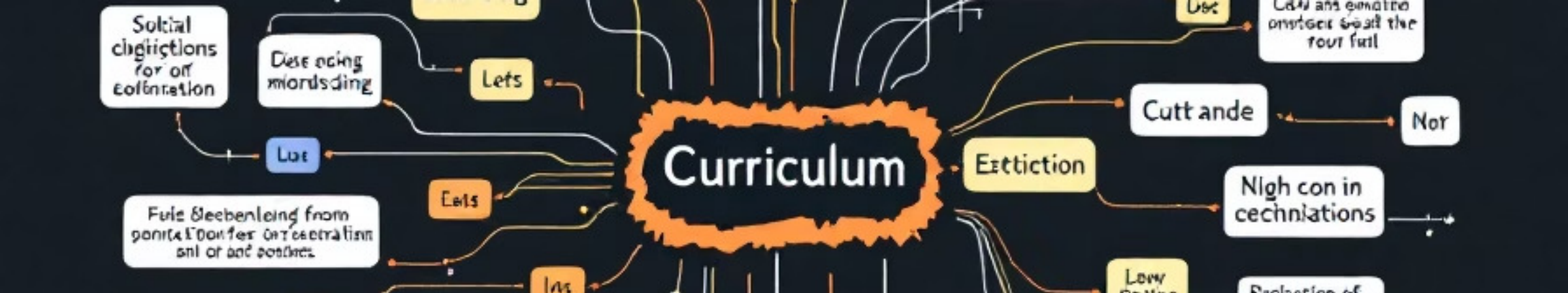
**Scenario-Based  
Training**



**Resource Creation**



**Critical Digital  
Literacy & Inclusion**



# Planning & Curriculum Design



1

Prompt GenAI to write a lesson plan from a core concept, then trainees evaluate alignment to the NC or exam specs.



2

Generate multiple versions of a starter activity and compare.



3

Ask GenAI to outline misconceptions for a topic, and trainees plan how to address them.



4

Use AI to generate differentiated lesson tasks for a mixed-attainment group.



5

Create a plan with embedded retrieval practice and analyse the spacing.



6

Use a trainee's own draft LO to prompt a full lesson outline and reflect on sequence.



7

Compare a GenAI-produced plan for an EYFS topic with one for KS3 on the same theme (e.g. 'light').



8

Prompt GenAI to generate a medium-term plan and compare to what a placement school uses.



9

Use GenAI to generate thematic units from a single big idea (e.g. 'sustainability') across subjects.



10

Trainees use AI to plan a series of SEND-adapted activities based on an EHCP profile.





# Professional Studies

## Prompting & Objectives

- 21. Prompt GenAI to generate possible ECT targets and SMART objectives for a trainee.
- 22. Use AI to simulate different mentor feedback styles and evaluate tone and effectiveness.
- 23. Ask GenAI to write a school policy on uniform or mobile phones and critique tone.

## Observations & Reflection

- 24. Prompt the AI to simulate a classroom observation and write feedback for a trainee.
- 25. Ask AI to draft a reflective log after a challenging week and compare styles.
- 26. Generate possible mentor-trainee conversation transcripts and analyse power dynamics.

## Analysis & Problem Solving

- 27. Use GenAI to compare job descriptions for teaching roles across key stages.
- 28. Prompt a scenario about a lesson going wrong and ask for AI-generated recovery strategies.
- 29. Use AI to list 10 myths about teaching and ask trainees to debunk them.

## Interview Practice

- 30. Create Ofsted-style questions on behaviour or subject knowledge for mock interviews.



# Subject Knowledge for Teaching

**31**

## **Practice Activities**

Ask GenAI to simplify a GCSE concept for a Year 5 pupil and critique accuracy.

**32**

## **Error Analysis**

Generate explanations with incorrect science/maths and have trainees correct them.

**33**

## **Model Answers**

Use GenAI to produce model answers for exam questions and compare with mark schemes.

**34**

## **Extension Questions**

Prompt the AI to simulate a gifted pupil asking an extension question.

**35**

## **Vocabulary Lists**

Use GenAI to generate key vocabulary lists with trainee commentary on definitions.

**36**

## **Visual Aids**

Create visual representations of scientific or geographical processes with AI image generation.

**37**

## **Teacher vs. Pupil Talk**

Ask for 'teacher talk' and 'pupil talk' examples on a topic and compare registers.

**38**

## **Perspectives on Sensitive Issues**

Use AI to explain a controversial or sensitive issue from different perspectives (e.g. colonialism).

**39**

## **Simulated Confusion**

Prompt the AI to act as a confused pupil and have trainees write teacher responses.

**40**

## **SATs Question Creation**

Trainees prompt GenAI to create a SATs-style question and then mark it themselves.

# Reflection Ideas using AI

31. Ask AI to write an overly positive and overly negative lesson reflection; trainees analyse both.



33. Use AI to generate opposing reflections on the same lesson and compare focus points.



32. Prompt GenAI to write a reflective journal in the voice of a trainee from a different background.



35. Generate a 'blind' lesson description and ask trainees to reflect as if it were theirs.



34. Create AI-generated reflection prompts (e.g., 'How did you support engagement today?')



37. Ask AI to write reflections on classroom climate and emotional literacy.



36. Use GenAI to simulate a trainee responding to poor feedback, then critique professionalism.



39. Use GenAI to model shallow vs deep reflective writing and discuss how to support progression.



38. Prompt GenAI to simulate a voice note to a mentor summarising a lesson.

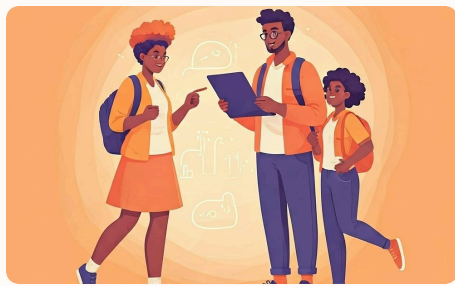


40. Ask the AI to generate questions for a peer reflection group.





# Modelling Pedagogy & Metacognition



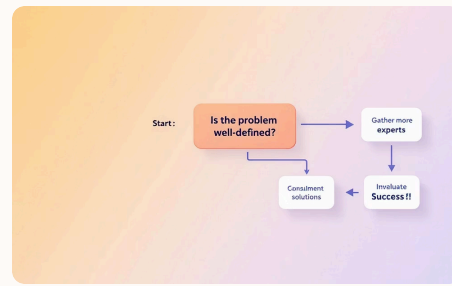
## 41. Live Prompt Tweaking

Demonstrate refining prompts: 'Add retrieval... now make it accessible for EAL... now for KS1.'



## 42. Refining Prompts

Model a poor prompt yielding generic results, then refine it collaboratively.



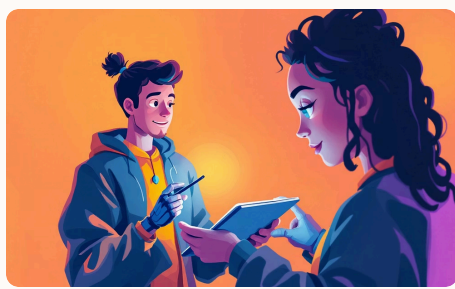
## 43. Questioning Sequences

Use AI to generate multiple questioning sequences and evaluate their challenge level.



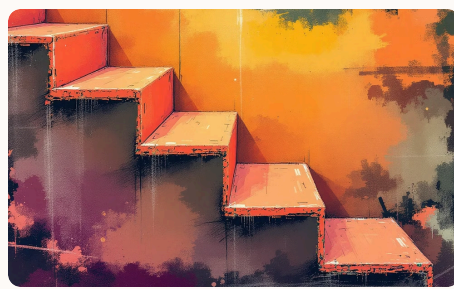
## 44. Lesson Hooks

Generate engaging lesson hooks or entry questions, assessing their relevance to objectives.



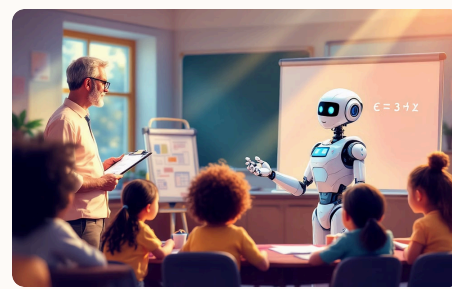
## 45. Well-Modelled Explanation

Prompt AI to describe a strong explanation and have trainees identify missing elements.



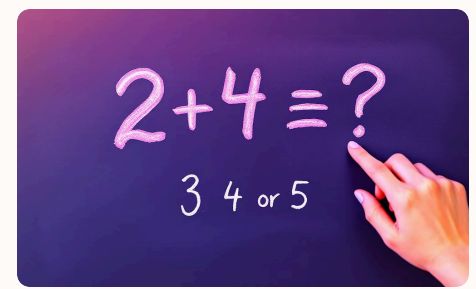
## 46. Poor Scaffolding

Show an example of poor scaffolding and invite trainees to suggest improvements.



## 47. Ofsted Perspective

Display a GenAI explanation and discuss what Ofsted might critique.



## 48. Worked Examples

Use AI to model a worked example in maths; trainees spot hidden steps.



## 49. Visual Prompts

Generate visual prompts or diagrams with deliberate gaps for trainees to complete.



## 50. Metacognitive Modelling

Model your own metacognitive decisions while interacting with the tool: 'Notice how I reworded that...'

# Scenario-Based Training



## 51. Parent Interactions

Generate scenarios with parent complaints to explore emotional literacy skills.

## 52. Mentor Relationships

Simulate mentor-trainee tensions and assess resolution techniques.

## 53. First Week Challenges

Create early challenges for trainees and prioritise response strategies.

## 54. Placement Experiences

Use AI to compose placement diary reflections and discuss wellbeing support.

## 55. Behaviour Management

Generate alternative endings to behaviour scenarios to change outcomes.

## 56. Safeguarding Reports

Create contrasting AI-generated reports and evaluate for accuracy.

## 57. Interview Simulation

Simulate headteacher interviews and analyse cultural fit of trainees.

## 58. Parent Communication

Critique AI-generated letters to parents and improve tone and accessibility.

## 59. Poor AI Advice

Create scenarios with flawed AI advice and discuss their issues.

## 60. Daily Timeline

Prompt AI to outline a school day timeline and reflect on time management.



# Resource Creation

## Strategies

- ☐ **61.** Generate three versions of the same handout and compare readability for different year groups.
- ☐ **62.** Ask AI to produce a bilingual version of a parent communication and discuss accessibility.
- ☐ **63.** Prompt GenAI to produce worksheets that embed cognitive load principles.
- ☐ **64.** Use GenAI to generate retrieval grids or memory quizzes.
- ☐ **65.** Prompt the AI to generate exam-style questions for different levels of cognitive demand.

## Actions

- ☐ **66.** Ask GenAI to produce visuals or icons for behaviour systems or routines.
- ☐ **67.** Generate SEND-specific prompts (e.g. visual timetable cards, simplified instructions).
- ☐ **68.** Use GenAI to convert a dense academic reading into trainee-friendly bullet points.
- ☐ **69.** Ask GenAI to simulate a professional reading summary for a PGCE assignment.
- ☐ **70.** Create or adapt an existing rubric using GenAI to align with assessment criteria.



# Critical Digital Literacy & Inclusion



## Bias Detection

71. Generate stereotyped pupil profiles and use as case studies for bias detection.



## Bias Detection

72. Prompt GenAI to write 'ideal teacher' descriptions and analyse representation.



## Bias Detection

73. Ask AI to write a history summary and check for Western-centric or colonial framing.



## Bias Detection

74. Explore what happens when you ask GenAI to describe a 'normal school.'



## Bias Detection

75. Generate lesson plans for SEND pupils and compare assumptions across tools.



## Bias Detection

76. Prompt AI to write about gender roles in different subjects and critique language.



## Bias Detection

77. Ask GenAI to write career advice for a pupil and explore biases in guidance.



## Bias Detection

78. Compare tools (ChatGPT vs Claude) for how they handle inclusivity topics.



## Bias Detection

79. Explore hallucinations: Ask for incorrect definitions and discuss responsibility.



## Bias Detection

80. Ask AI how it should be used in the classroom—and critique the guidance it gives.



# Advanced Applications & Experimentation



Use GenAI to generate scripts for restorative pupil-teacher conversations.



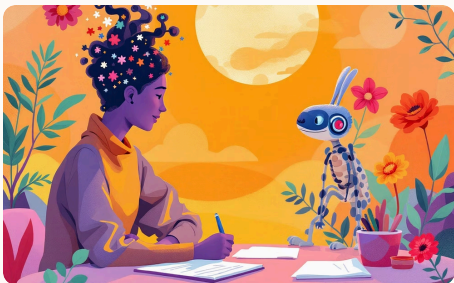
Prompt AI to roleplay a teaching assistant discussing progress with a mentor.



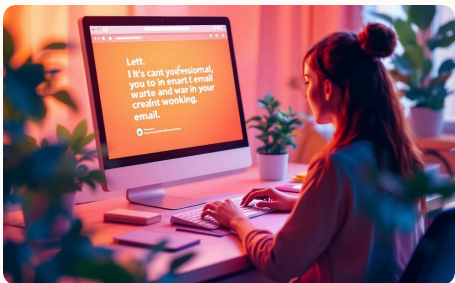
Generate lesson evaluation criteria and compare with Ofsted expectations.



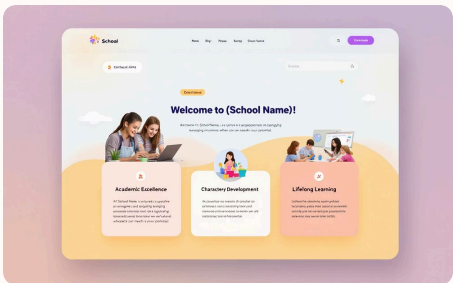
Use GenAI to create prompts for discussions on critical school incidents.



Ask GenAI to rewrite lesson plans for neurodivergent pupils with specific needs.



Trainees use AI to generate mock professional emails to parents and refine them.



Generate school website content about curriculum aims and evaluate its tone.



Prompt GenAI to create weekly timetables and reflect on subject time allocation.



Ask GenAI to roleplay a pupil with anxiety during transitions and discuss support strategies.



Use AI to model effective and ineffective questioning sequences in Socratic seminars.

# Mentoring, Feedback & Research Use



**91.**

Use GenAI to simulate trainee reflections on observed lessons and compare them for depth.



**92.**

Generate differentiated marking feedback comments for a range of pupil abilities.



**93.**

Create sample GenAI-generated mentor meeting summaries and evaluate their professionalism.



**94.**

Prompt GenAI to produce summaries of education research for trainees to critique.



**95.**

Ask AI to generate sample email threads between parents and teachers for discussion.



**96.**

Create GenAI prompts to support trainees planning inclusive assemblies or form times.



**97.**

Use GenAI to produce contrasting CPD plans and evaluate their impact on trainee development.



**98.**

Simulate PGCE interviews with GenAI-generated panel questions and model answers.



**99.**

Generate cross-curricular project outlines using AI and assess how well they align with teaching standards.



**100.**

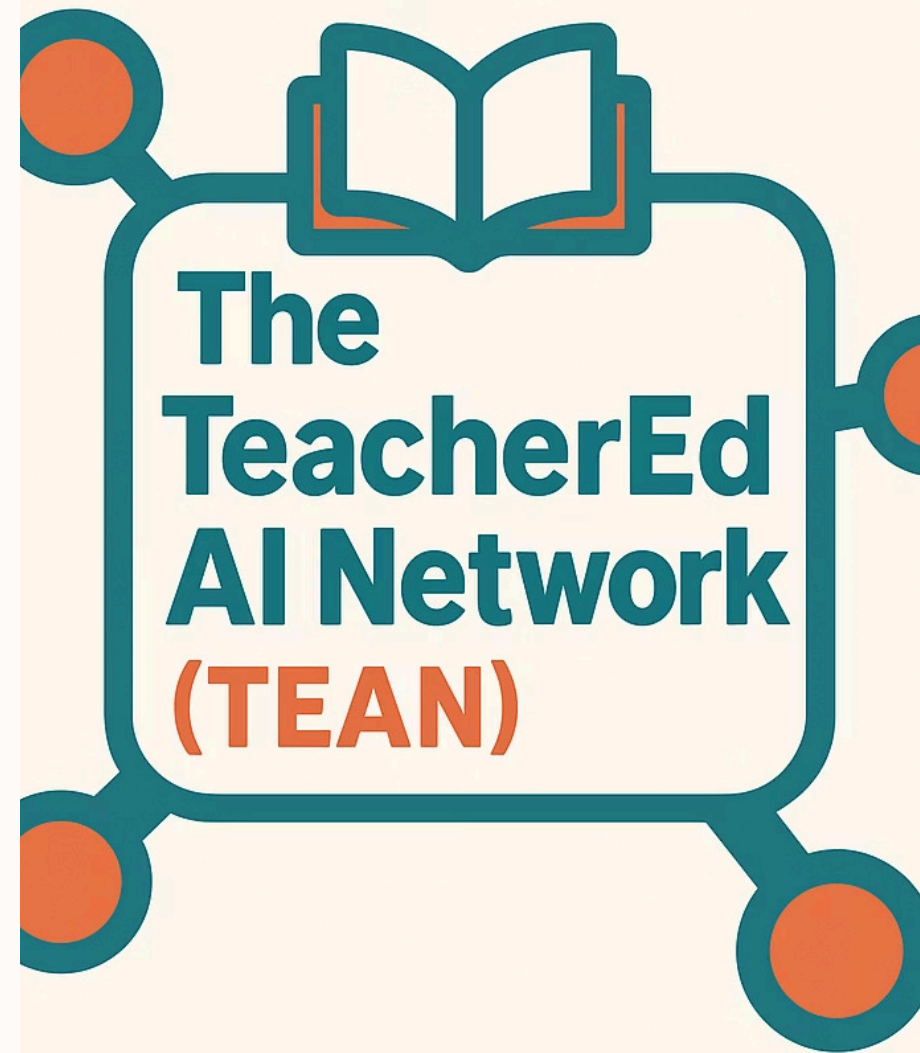
Prompt GenAI to write a week-by-week reflection series for a trainee and evaluate progression over time.



# Continue the Conversation

Join our network of Teacher Educators exploring GenAI use in teacher training and education.

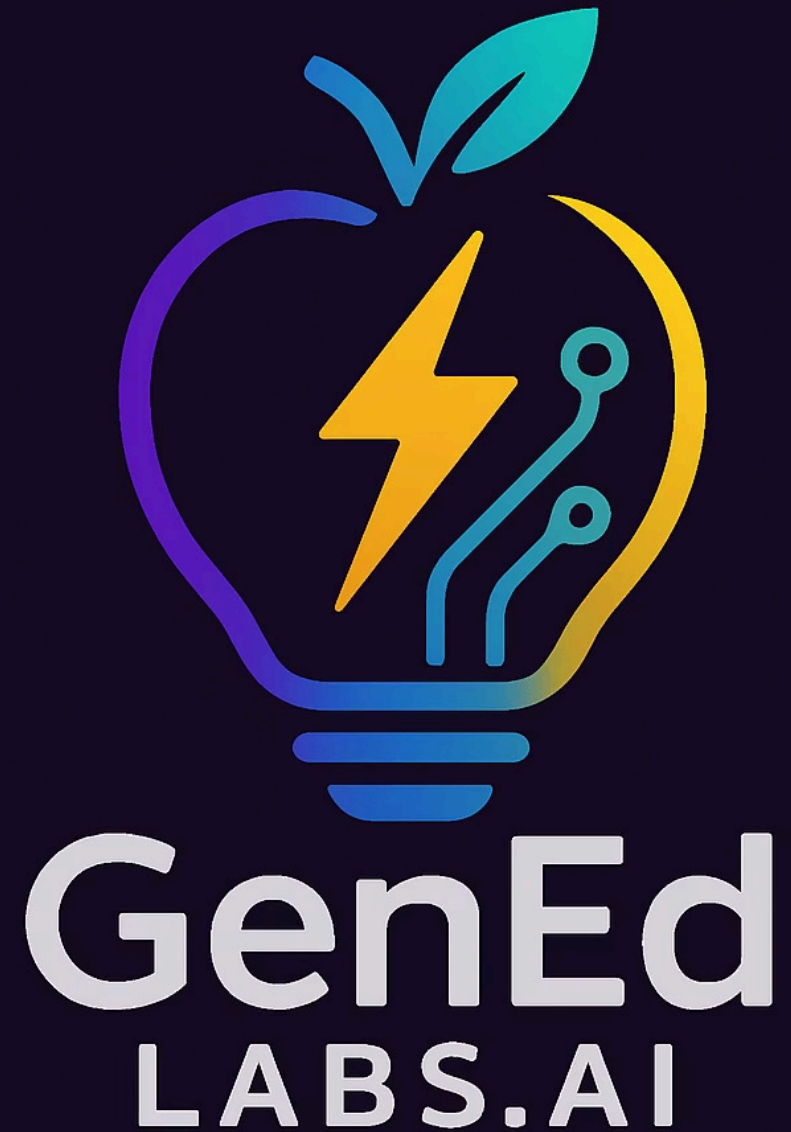
[The TeacherEd AI Network](#)



# Get in Touch

Thank you for exploring "100 Ways of Using GenAI in Teacher Education" with us.

[victoria@genedlabs.ai](mailto:victoria@genedlabs.ai) | [www.genedlabs.ai](http://www.genedlabs.ai)



Made with **Gamma**